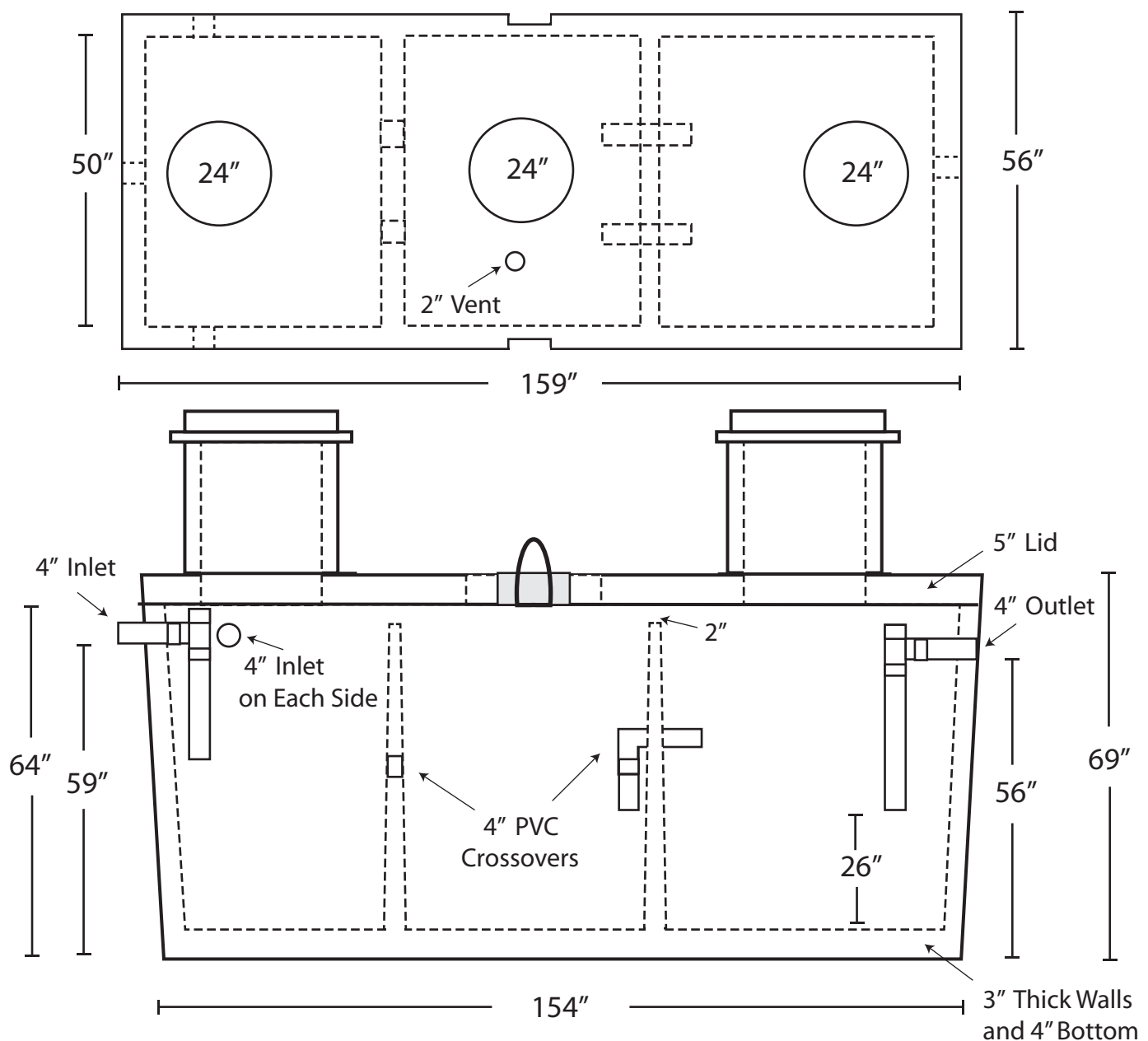


1500 Gallon Grease Interceptor (3 Compartment)



Notes:

- 4000 PSI Concrete
- Features a Poured in Place Polylok Poly II High Pressure Pipe Seal for Each of the (3) Available Inlets and (1) Outlet
- Includes 4" PVC Tee's for the Inlet, Outlet and (2) Crossovers
- Includes Riser Rings and/or 24" Diameter Concrete Pipe as Risers for Access
- Includes (3) East Jordan Iron Works #1848 Cast Iron Ring and Covers w/ Gaskets for Access

Reinforcement:

- Lid - #4 Bar on 12" Centers with #4 Bar at Diagonals Around the Openings
- Bottom Slab - #4 Rebar on 12" Centers
- Upper Walls - #4 Rebar on 12" Centers Vertically and #4 Rebar on 18" Centers Horizontally

